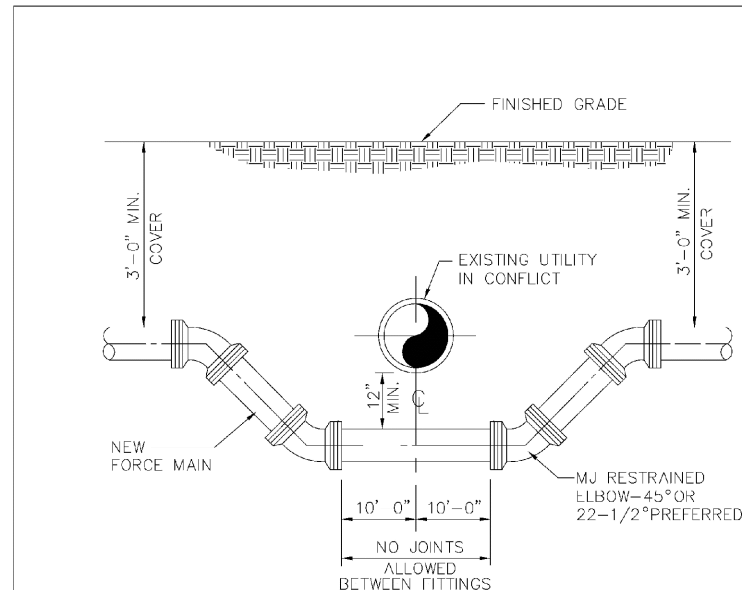


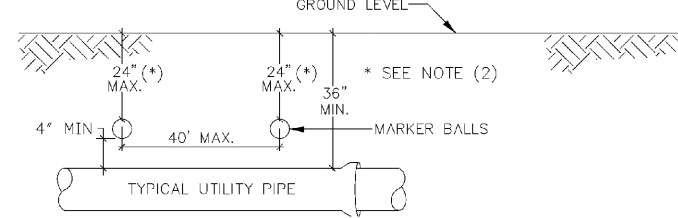
DRC
PZ24-12000003
08/21/2024



NOTES:
WHEN CONDITIONS PERMIT, PIPE DEFLECTION MAY BE USED INSTEAD OF BENDS TO OBTAIN THE MINIMUM CLEARANCE. FACTORY OFFSETS MAY BE USED.

TYPICAL CONFLICT DETAIL

ENGINEERING STANDARDS 2022			
REVISIONS	BY	DATE	DESCRIPTION
BY DATE	ENGINEERING DIVISION		TYPICAL CONFLICT (SEWER)
S.S. JUNE 2022	CITY OF POMPAÑO BEACH		
S.S. 06/23/22			
SCALE: N.T.S.			
DATE: JUNE 2022			
DWG. NO.			206-1

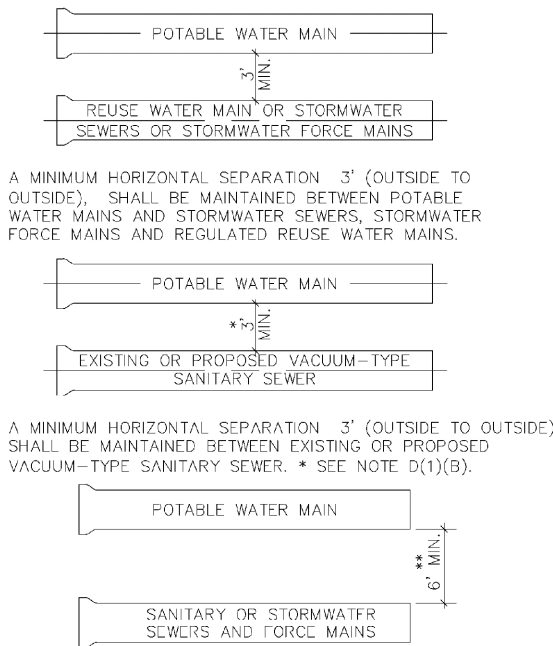


GENERAL NOTES:

- ALL UTILITY PIPE SHALL BE INSTALLED WITH 4" MARKER BALLS PLACED EVERY 40' AND A LIGHT FITTING FOR IDENTIFICATION AND MARKING PURPOSES. BOLLING ABOVE THE PIPE AT A MINIMUM DEPTH OF 24 INCHES OR AS APPROVED BY THE OWNER. IT SHALL BE COLOR CODED AND MARKED AS FOLLOWS:
SEWER SYSTEM
A. COLOR: GREEN
B. FITTING: SANITARY SEWER
C. FREQUENCY OF MARKER BALLS SHALL BE 121.6 KHz.
D. THE MARKER BALLS CAN BE BORED IN ANY ORIENTATION.
THE MARKER BALLS SHALL BE IDENTIFIED BY STANDARD METAL IDENTIFICATION EQUIPMENT AND SHALL BE MANUFACTURED BY TEMPO OR 3M LOGATOR SYSTEM OR EQUIVALENT (FREQUENCY 121.6 KHz.)
- FOR LARGE DIAMETER PIPE INSTALLED AT DEPTHS BELOW 4'-0" MARKER BALLS SHALL BE PLACED AT A MINIMUM DEPTH OF 4'-0" BELOW GRADE.

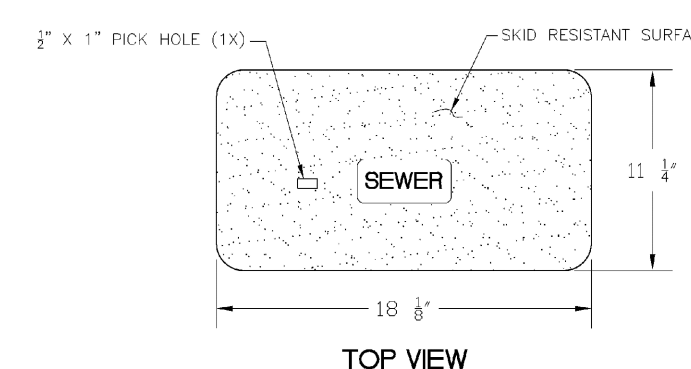
SEWER PIPE IDENTIFICATION

ENGINEERING STANDARDS 2022			
REVISIONS	BY	DATE	DESCRIPTION
BY DATE	ENGINEERING DIVISION		SEWER PIPE IDENTIFICATION
S.S. 06/23/22	CITY OF POMPAÑO BEACH		
SCALE: N.T.S.			
DATE: JUNE 2022			
DWG. NO.			207-1



MINIMUM HORIZONTAL SEPARATION REQUIREMENTS FOR POTABLE WATER, REUSE, STORMWATER AND SEWER LINES

ENGINEERING STANDARDS 2022			
REVISIONS	BY	DATE	DESCRIPTION
BY DATE	ENGINEERING DIVISION		MIN. HORIZONTAL SEPARATION FOR SANITARY SEWER
S.S. 06/23/22	CITY OF POMPAÑO BEACH		
SCALE: N.T.S.			
DATE: JUNE 2022			
DWG. NO.			209-1

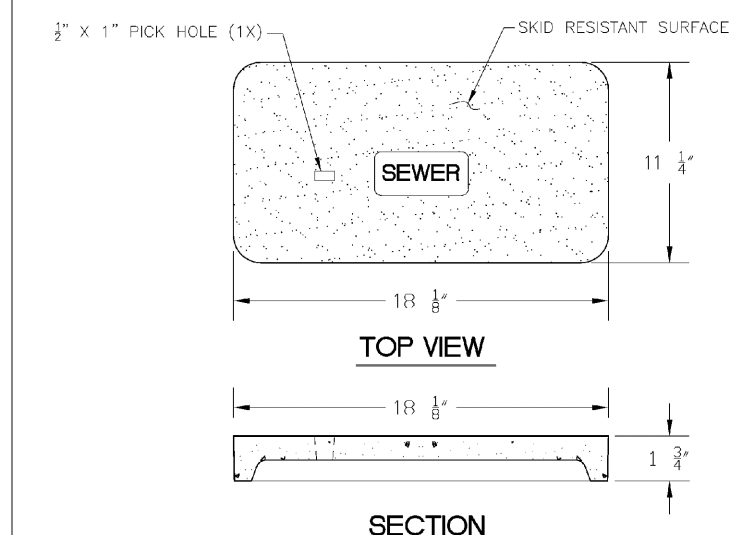


SEWER BOX AND COVER

- NOTE
- MATERIAL: FIBERGLASS REINFORCED POLYMER CONCRETE & FIBERGLASS REINFORCED POLYMER
 - CO. OR. GREEN
 - LOAD RATING: AS (ASTM C857)
 - LOAD: SEWER

PRODUCT RATING - NON TRAFFIC			
LOAD DESIGNATION	DESCRIPTION	DESIGN LOADS (LIVE & IMPACT)	TESTING
AASHTO H10	TRUCK TRAFFIC	8,000	22,568 (4)
		10,400	282

ENGINEERING STANDARDS 2022			
REVISIONS	BY	DATE	DESCRIPTION
BY DATE	ENGINEERING DIVISION		SEWER BOX AND COVER
S.S. JUNE 2022	CITY OF POMPAÑO BEACH		CDR Part No. WB03-11B-12
SCALE: N.T.S.			
DATE: JUNE 2022			
DWG. NO.			210-1

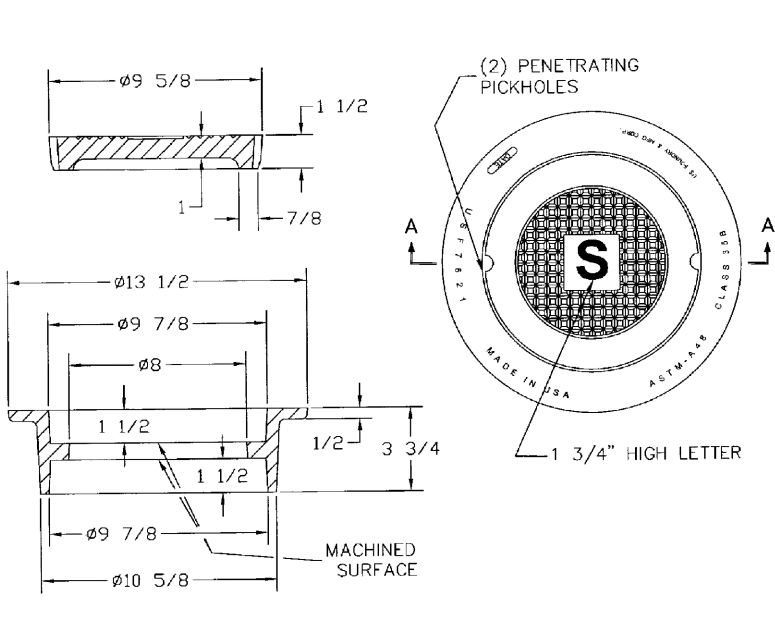


NOTE

- MATERIAL: FIBERGLASS REINFORCED POLYMER CONCRETE & FIBERGLASS REINFORCED POLYMER
- CO. OR. GREEN
- LOAD RATING: AS (ASTM C857)
- LOAD: SEWER

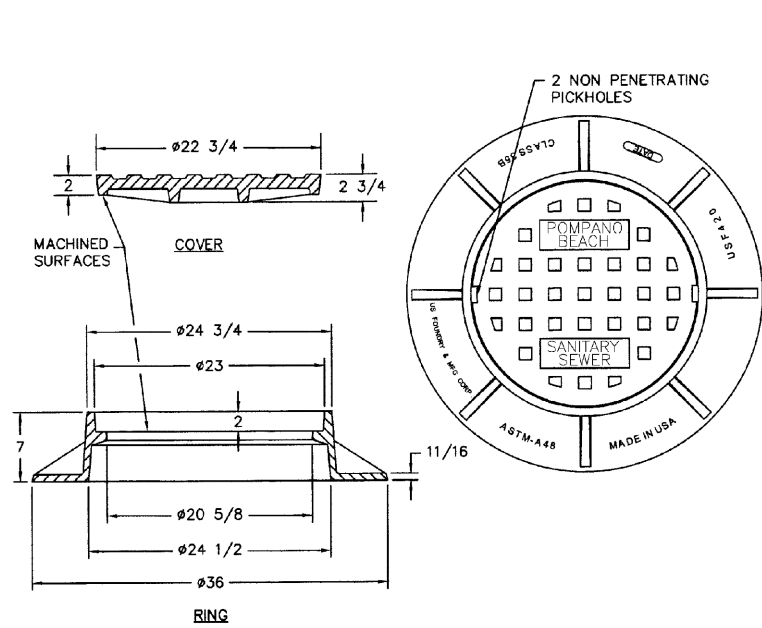
PRODUCT RATING - TRAFFIC			
LOAD DESIGNATION	DESCRIPTION	DESIGN LOADS (LIVE & IMPACT)	TESTING
AASHTO H15	MEDIUM TRUCK TRAFFIC	12,000	27,000 (5)
		15,600	225

ENGINEERING STANDARDS 2022			
REVISIONS	BY	DATE	DESCRIPTION
BY DATE	ENGINEERING DIVISION		SEWER BOX AND COVER
S.S. JUNE 2022	CITY OF POMPAÑO BEACH		CDR Part No. WB03-11B-12
SCALE: N.T.S.			
DATE: JUNE 2022			
DWG. NO.			210-2



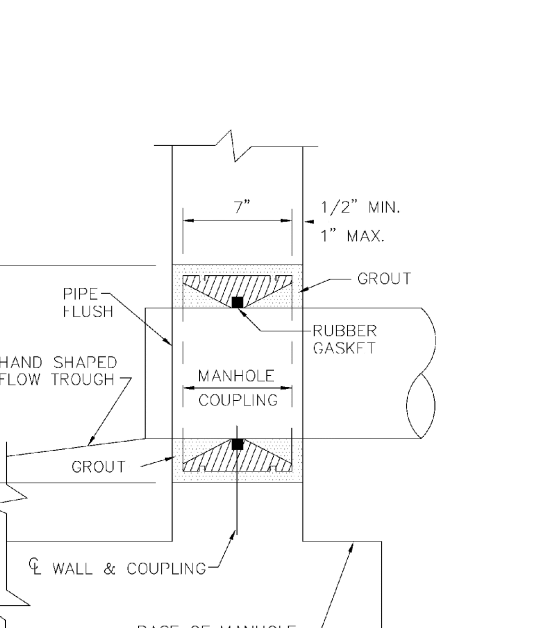
SEWER BOX AND COVER - HEAVY TRAFFIC

ENGINEERING STANDARDS 2022			
REVISIONS	BY	DATE	DESCRIPTION
BY DATE	ENGINEERING DIVISION		SEWER BOX AND COVER
S.S. JUNE 2022	CITY OF POMPAÑO BEACH		HEAVY TRAFFIC
SCALE: N.T.S.			
DATE: JUNE 2022			
DWG. NO.			210-3



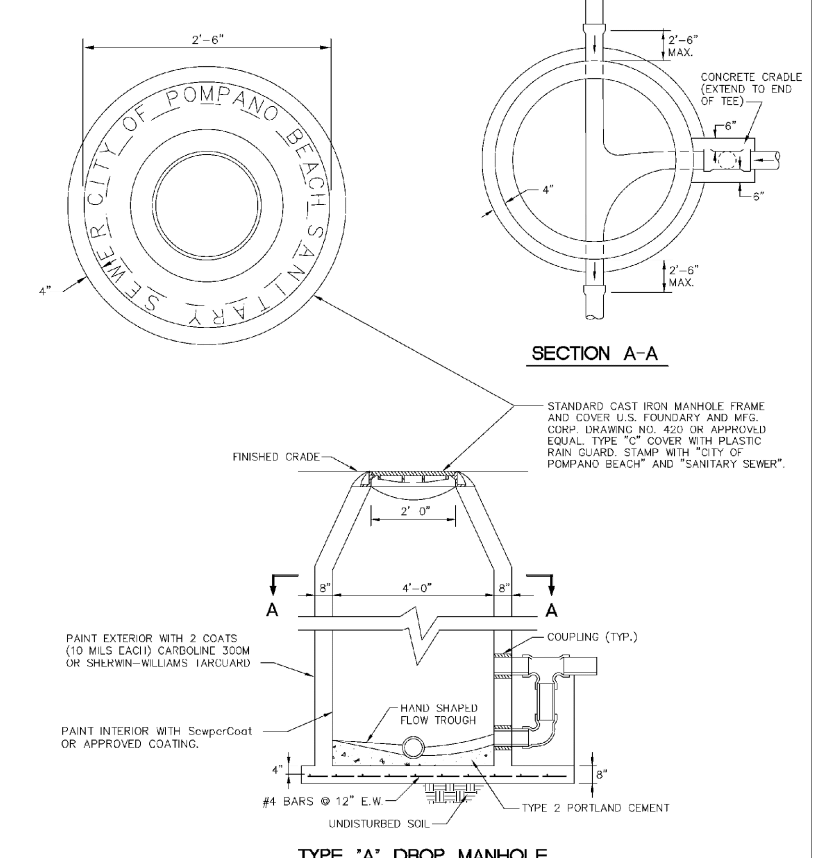
TRAFFIC RATED FRAME & COVER

ENGINEERING STANDARDS 2022			
REVISIONS	BY	DATE	DESCRIPTION
BY DATE	ENGINEERING DIVISION		TRAFFIC RATED SEWER COVER
S.S. JUNE 2022	CITY OF POMPAÑO BEACH		
SCALE: N.T.S.			
DATE: JUNE 2022			
DWG. NO.			211-1



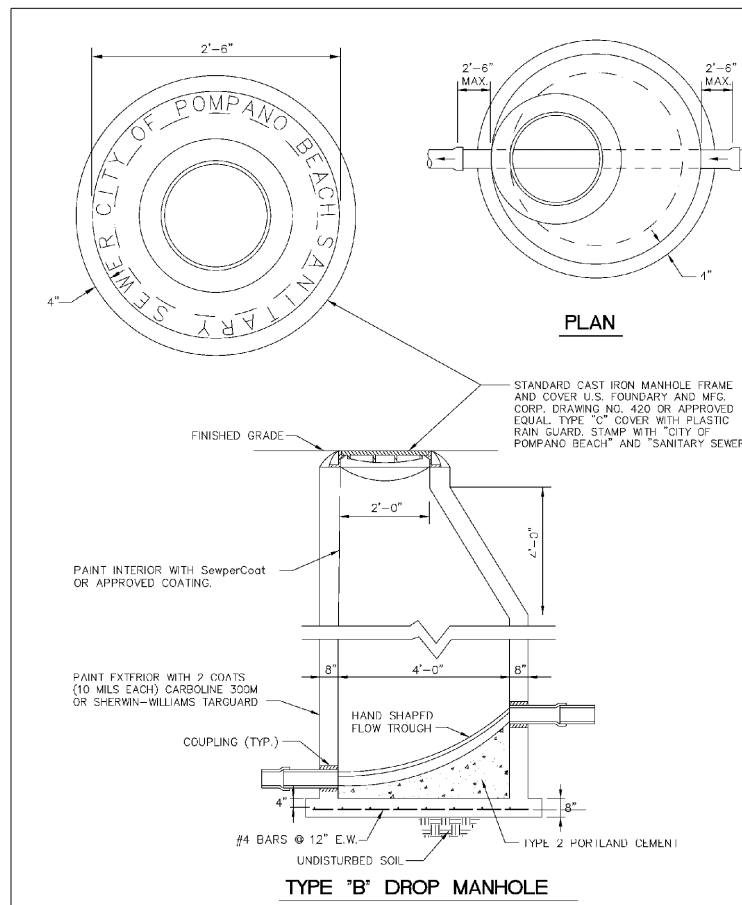
MANHOLE COUPLING

ENGINEERING STANDARDS 2022			
REVISIONS	BY	DATE	DESCRIPTION
BY DATE	ENGINEERING DIVISION		MANHOLE COUPLING
S.S. JUNE 2022	CITY OF POMPAÑO BEACH		
SCALE: N.T.S.			
DATE: JUNE 2022			
DWG. NO.			212-1



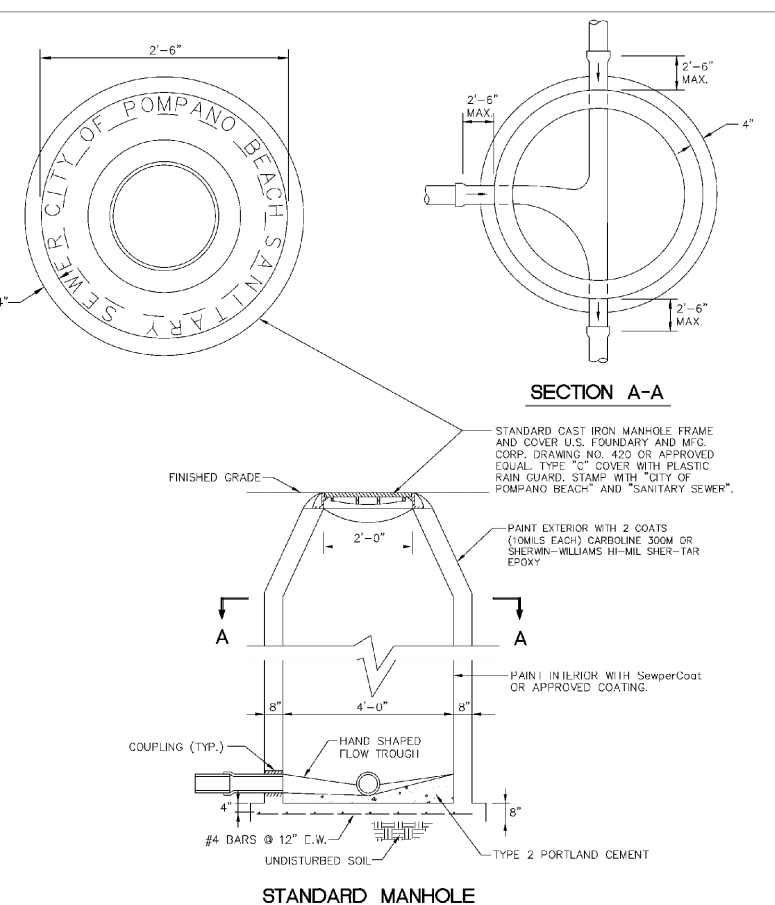
TYPE 'A' DROP MANHOLE

ENGINEERING STANDARDS 2022			
REVISIONS	BY	DATE	DESCRIPTION
BY DATE	ENGINEERING DIVISION		TYPE 'A' DROP MANHOLE
S.S. JUNE 2022	CITY OF POMPAÑO BEACH		
SCALE: N.T.S.			
DATE: JUNE 2022			
DWG. NO.			213-1



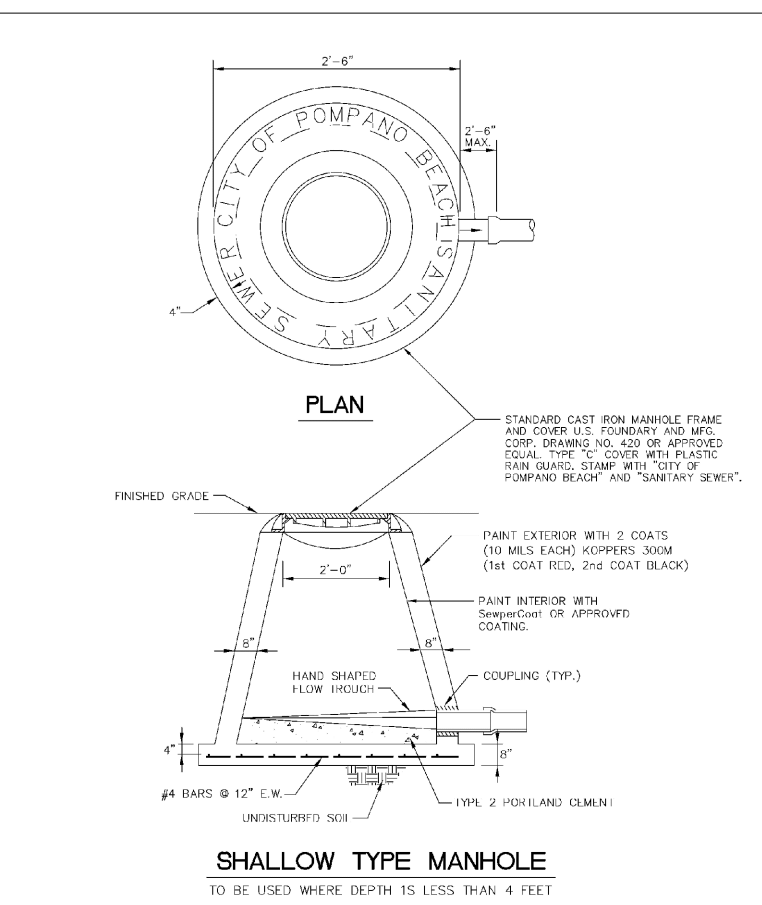
TYPE 'B' DROP MANHOLE

ENGINEERING STANDARDS 2022			
REVISIONS	BY	DATE	DESCRIPTION
BY DATE	ENGINEERING DIVISION		TYPE 'B' DROP MANHOLE
S.S. JUNE 2022	CITY OF POMPAÑO BEACH		
SCALE: N.T.S.			
DATE: JUNE 2022			
DWG. NO.			214-1



STANDARD MANHOLE

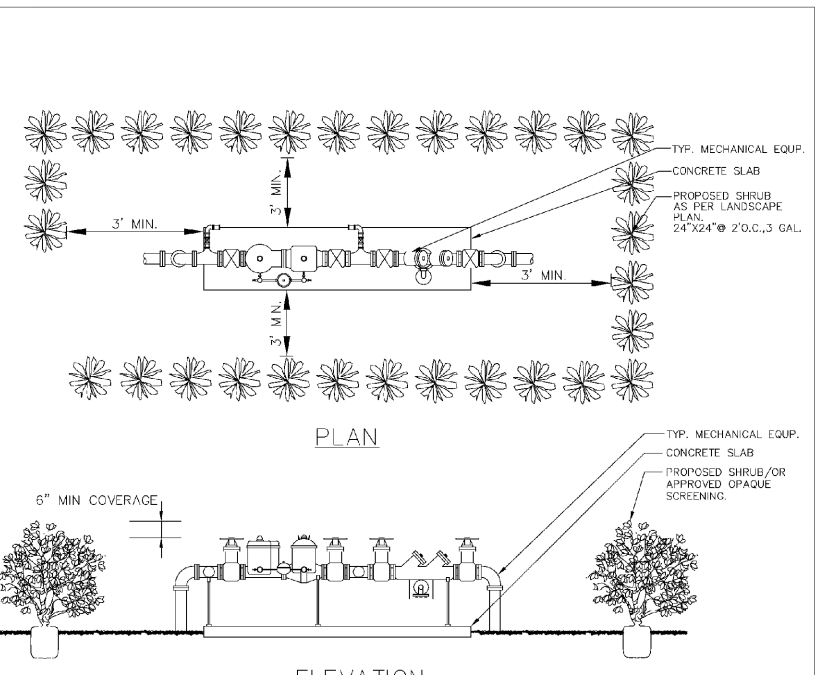
ENGINEERING STANDARDS 2022			
REVISIONS	BY	DATE	DESCRIPTION
BY DATE	ENGINEERING DIVISION		STANDARD MANHOLE
S.S. JUNE 2022	CITY OF POMPAÑO BEACH		
SCALE: N.T.S.			
DATE: JUNE 2022			
DWG. NO.			215-1



SHALLOW TYPE MANHOLE

ENGINEERING STANDARDS 2022			
REVISIONS	BY	DATE	DESCRIPTION
BY DATE	ENGINEERING DIVISION		SHALLOW TYPE MANHOLE
S.S. JUNE 2022	CITY OF POMPAÑO BEACH		
SCALE: N.T.S.			
DATE: JUNE 2022			
DWG. NO.			216-1

Step
hen
Botek
Digitally signed by
Stephen Botek
Date:
2024.07.01
17:13:53
-04'00'



TYPICAL SCREEN FOR UTILITIES

ENGINEERING STANDARDS 2022			
REVISIONS	BY	DATE	DESCRIPTION
BY DATE	ENGINEERING DIVISION		TYPICAL SCREEN FOR UTILITIES
S.S. JUNE 2022	CITY OF POMPAÑO BEACH		
SCALE: N.T.S.			
DATE: JUNE 2022			
DWG. NO.			315-1

REVISIONS

#	DATE	DESCRIPTION

NATHAN M. LEWIS
LICENSE
No. 86481
STATE OF FLORIDA
PROFESSIONAL ENGINEER
July 1, 2024

THIS DOCUMENT HAS BEEN DIGITALLY SIGNED AND SEALED BY NATHAN M. LEWIS, P.E. ON THE DATE ADJACENT TO THE SEAL.

PRINTED COPIES OF THIS DOCUMENT ARE NOT CONSIDERED SIGNED AND SEALED AND THE SIGNATURE MUST BE VERIFIED ON ANY ELECTRONIC COPIES.

Celebrating
15 Years

WATER AND SANITARY SEWER DETAILS

580 BRINY
580 Briny Ave
Pompano Beach, FL 33062

Botek Thurlow
Engineering, Inc.
3400 NW 9th Avenue, Suite 102, Ft. Lauderdale, FL 33309
www.botekthurlow-eng.com P: 954-568-8888 F: 954-568-0757

BTE PROJECT #
22-0804

PROJECT DATE:
10-23-22

SHEET #
C-2.3